

**OFFICE**

**DON MILLS**

**FOR LEASE**

**1,071 S.F.**

**100 Scarsdale Rd, Suite 202**



**100 Scarsdale Rd** - Prestige building situated in one of the most desirable and convenient areas of north Toronto. Located 1 block east of Leslie Street, south off York Mills Road. Easily accessible to the DVP, Highways 401 & 404. Public transit is 1 block away offering easy connections to all parts of the GTA.

**Features:**

- 2nd floor space with lots of windows and elevator service
- Steps to a vast variety of amenities: retail / services / restaurants
- Landlords head office is located in building

**Net Rent**                    **\$18.50/sf**

**Realty Taxes**            **\$ 3.10/sf**

**Operating**                **\$ 10.43/sf**

(Estimated 2018)  
Plus administration fee



*Inquiries call Sandi Cooper or email: [scooper@glencorp.com](mailto:scooper@glencorp.com)*

**G L E N   C O R P O R A T I O N**

100 Scarsdale Rd, Don Mills, Ontario M3B 2R8   T. 416-449-3300   F. 416-449-0392   [www.glencorp.com](http://www.glencorp.com)

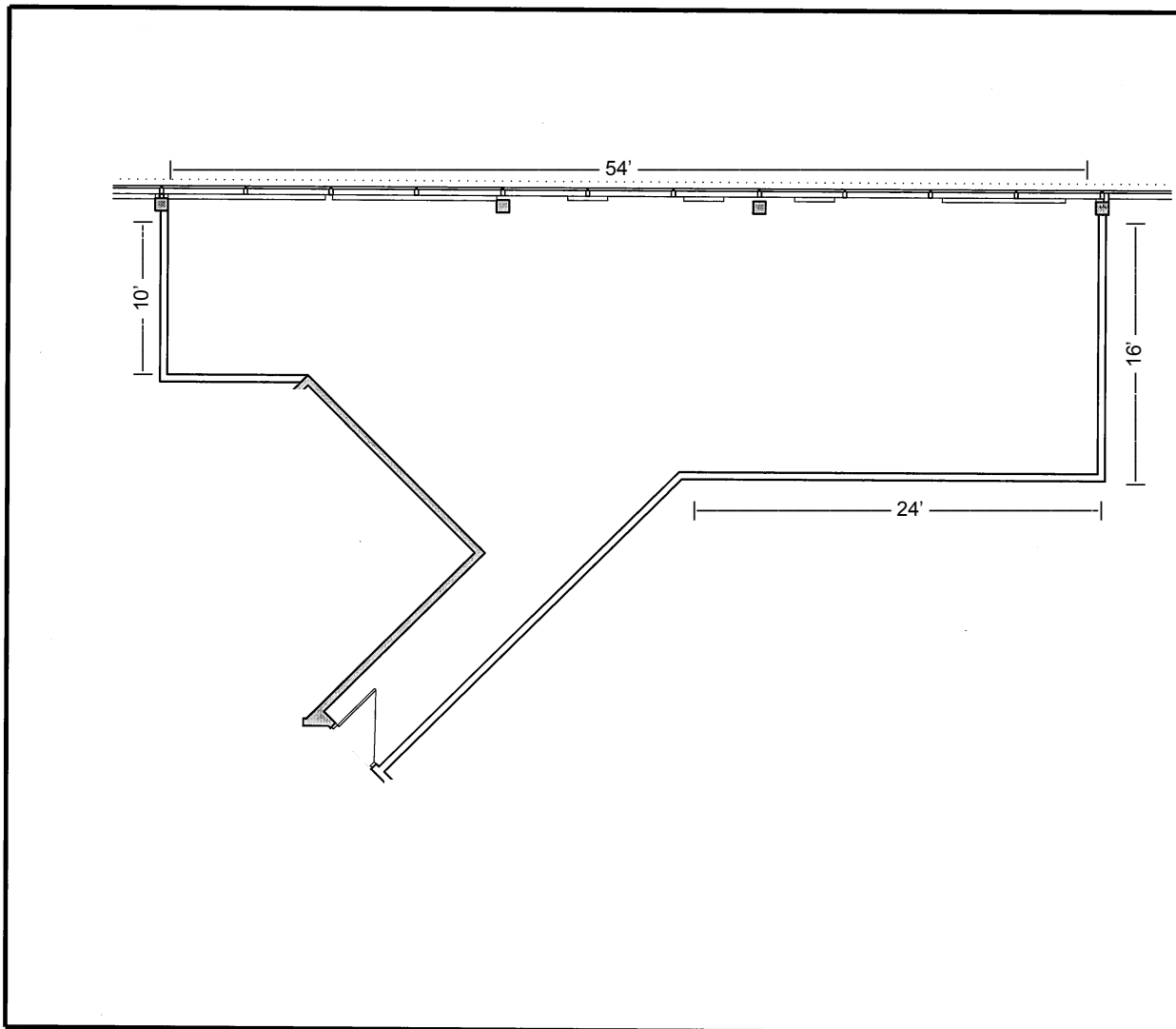
**OFFICE**

**DON MILLS**

**FOR LEASE**

**1,071 S.F.**

**100 Scarsdale Road Suite 202**



*Inquiries call Sandi Cooper or email: [scooper@glencorp.com](mailto:scooper@glencorp.com)*

**GLEN CORPORATION**

100 Scarsdale Rd, Don Mills, Ontario M3B 2R8 T. 416-449-3300 F. 416-449-0392 [www.glencorp.com](http://www.glencorp.com)