

INDUSTRIAL

RICHMOND HILL

FOR LEASE

6,227 S.F.

111 Granton Drive Unit 302



111 Granton Drive - Centrally located in Richmond Hill's Beaver Creek business park within Canada's largest high-tech business community. The building fronts on the west side of Leslie Street immediately south of 16th Avenue, easily accessible to Hwy's 404 and 407.

Features:

- 22% finished office area
(LL will refurbish office area)
- 18' clear height
- 1 TL & 1 DI shipping door
- 200 amp electrical

Net Rent **\$9.95/sf**

Realty Taxes **\$1.93/sf**

Operating **\$1.69/sf**
(Estimated 2019)
Plus administration fee

AVAILABLE - Aug 10, 2019



Inquiries call Sandi Cooper or email: scooper@glencorp.com

G L E N C O R P O R A T I O N

100 Scarsdale Rd, Don Mills, Ontario M3B 2R8 T. 416-449-3300 F. 416-449-0392 www.glencorp.com

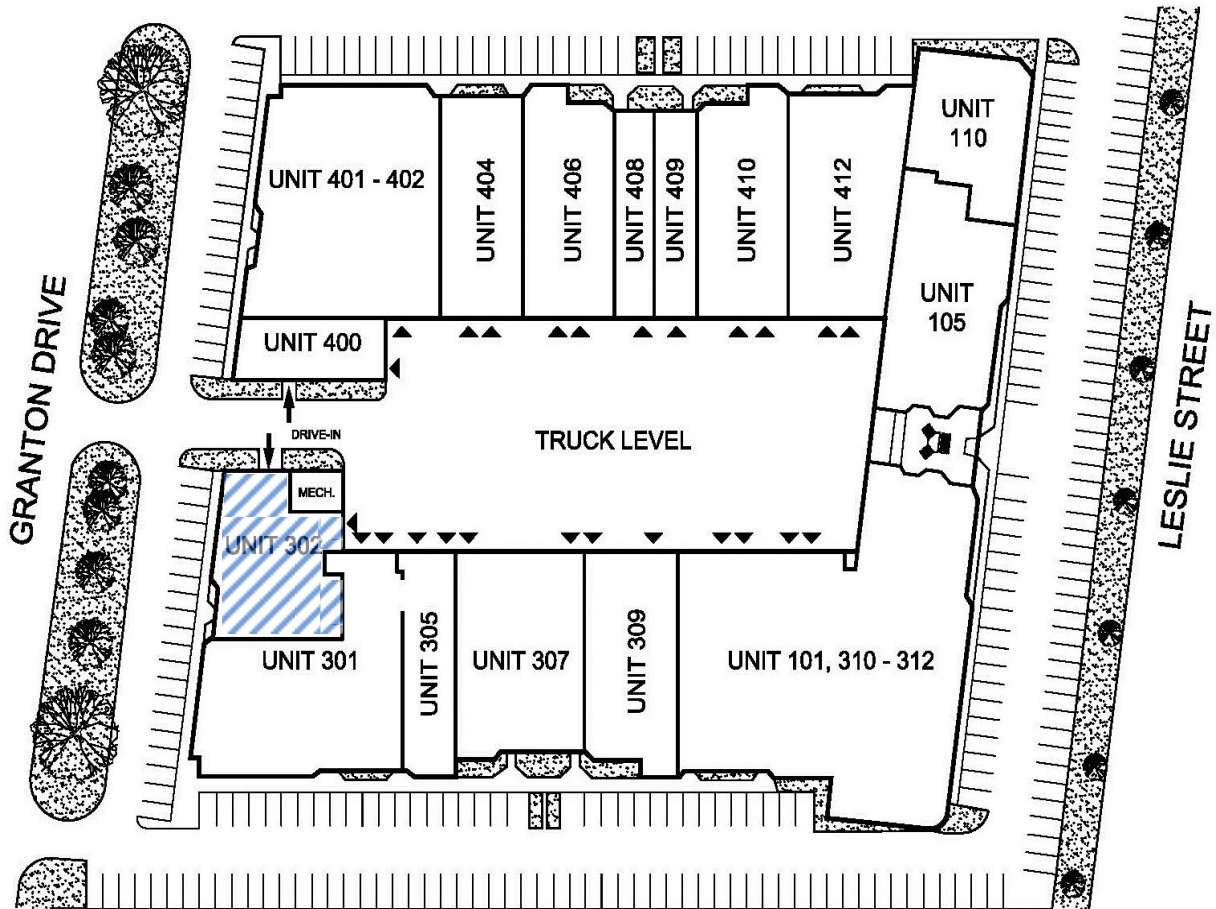
INDUSTRIAL

RICHMOND HILL

FOR LEASE

6,227 S.F.

111 Granton Drive Unit 302

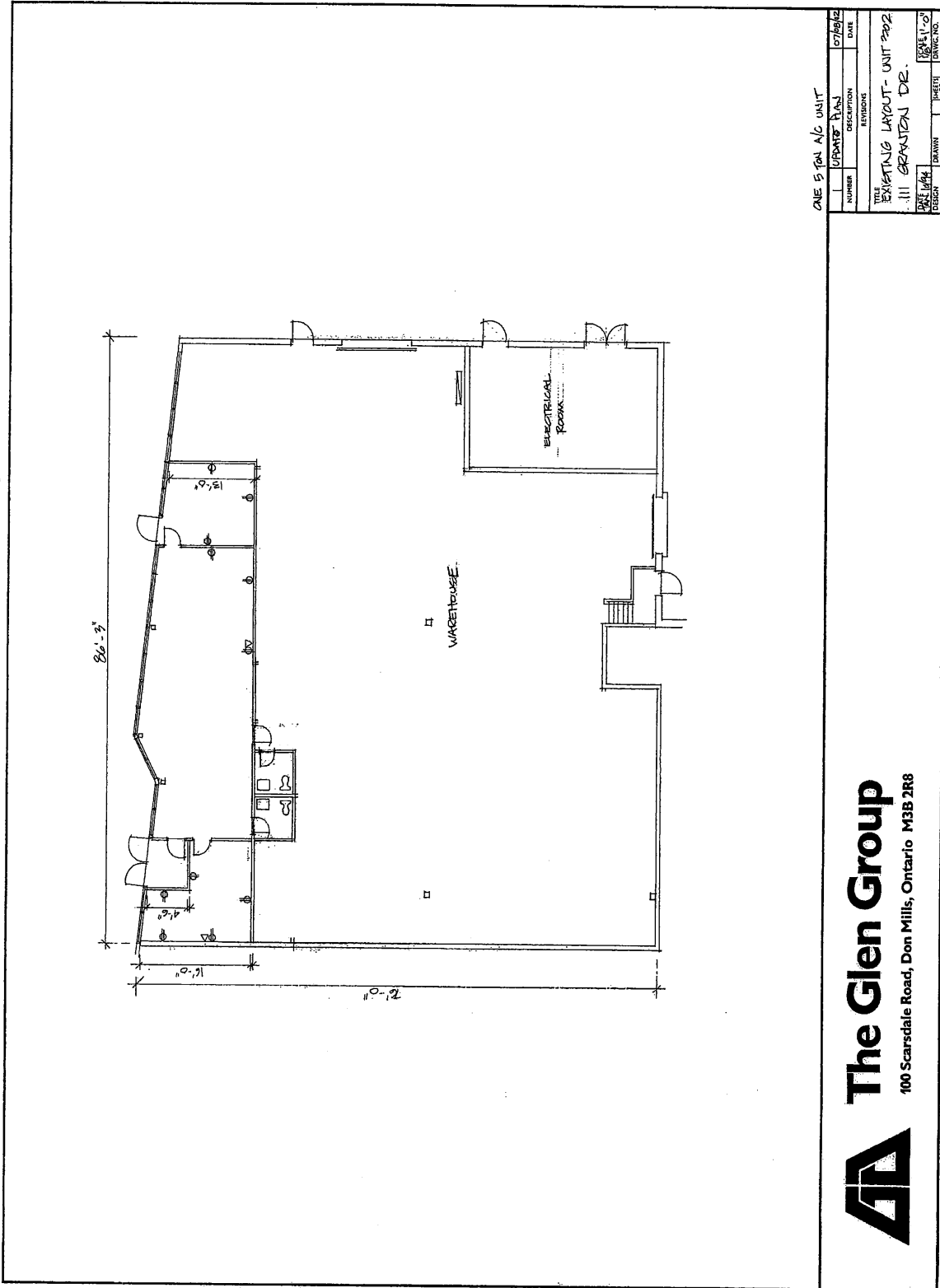


Inquiries call Sandi Cooper or email: scooper@glencorp.com

G L E N C O R P O R A T I O N

100 Scarsdale Rd, Don Mills, Ontario M3B 2R8 T. 416-449-3300 F. 416-449-0392 www.glencorp.com

111 Granton Drive Unit 302



The Glen Group
100 Scarsdale Road, Don Mills, Ontario M3B 2R8

