

INDUSTRIAL

NORTH YORK

FOR LEASE

5,437 S.F.

1661-1663 Flint Road



1625-1721 Flint Road - Located one block south of Steeles Ave, and one block west of Dufferin St. This location is centrally located in North York in a well established industrial area, with TTC providing connections to all parts of the GTA.

Features:

- 30% finished office area
- 1 truck level door
- 100 amp 600 volt electrical
- Landlord will refurbish office

Net Rent **\$7.50/sf**

TMI **\$3.46/sf**

(Estimated 2018)
Plus administration fee

AVAILABLE - Immediately



Inquiries call Sandi Cooper or email: scooper@glencorp.com

G L E N C O R P O R A T I O N

100 Scarsdale Rd, Don Mills, Ontario M3B 2R8 T. 416-449-3300 F. 416-449-0392 www.glencorp.com

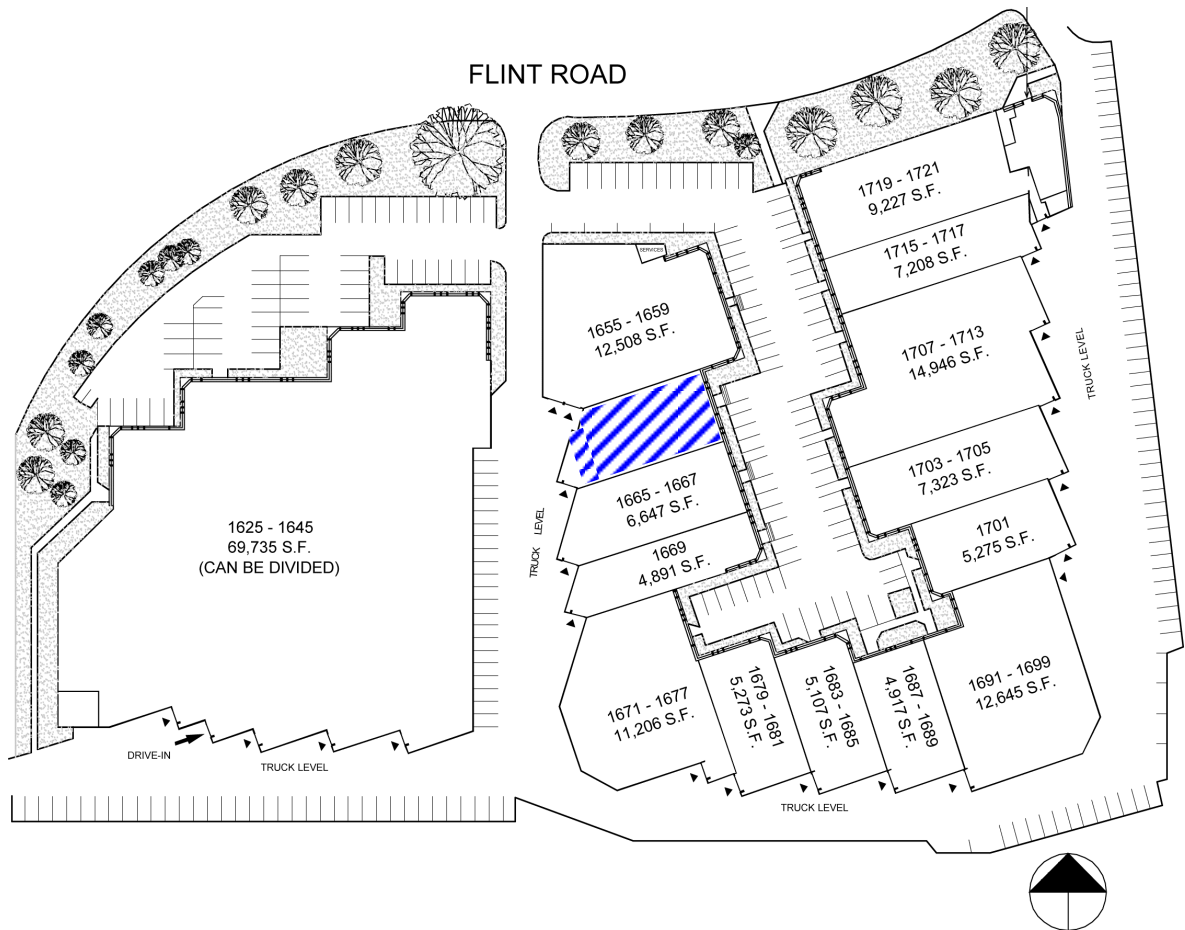
INDUSTRIAL

NORTH YORK

FOR LEASE

5,275 S.F.

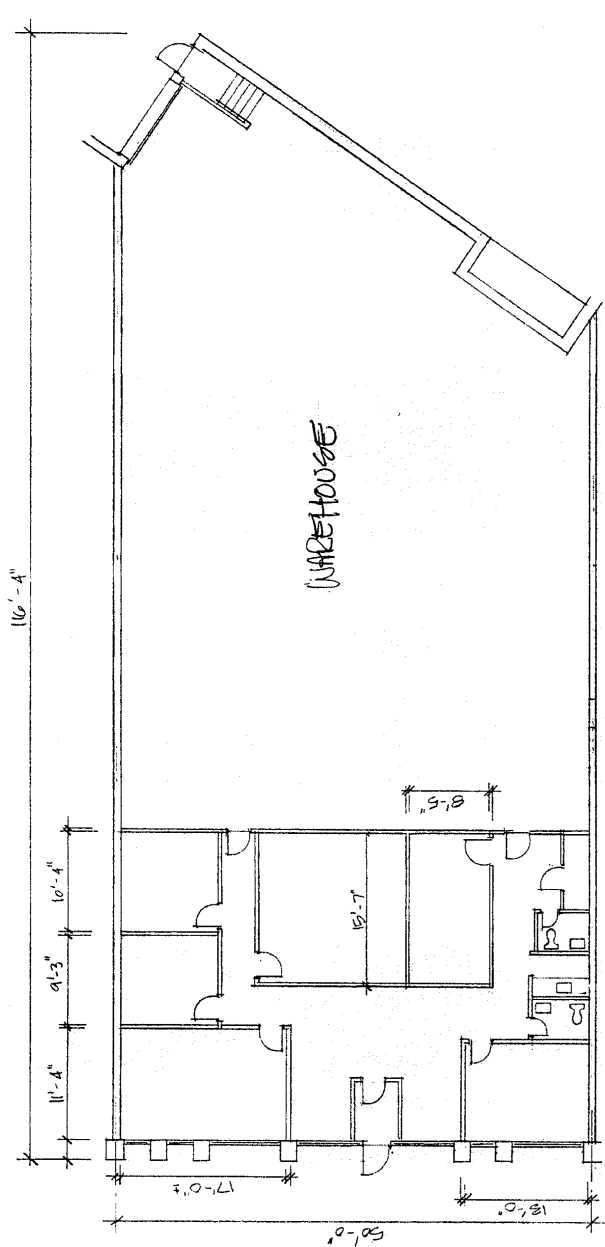
1661-1663 Flint Road



Inquiries call Sandi Cooper or email: scooper@glencorp.com

GLEN CORPORATION

100 Scarsdale Rd, Don Mills, Ontario M3B 2R8 T. 416-449-3300 F. 416-449-0392 www.glencorp.com



1	REVISED PER TENANT	03/20/00
NUMBER	DESCRIPTION	DATE
REVISIONS		
TITLE: 1661 FLINT ROAD		
DATE	DRAWN	SHEET OF
DESIGN	DRAWING NO.	

Glen Corporation
 100 Scarsdale Road, Don Mills, Ontario M3B 2R8

