

# INDUSTRIAL

# NORTH YORK

## FOR LEASE 5,275 & 7,323 s.f.

**Units can be combined for a total of 12,598 s.f.**



**1625-1721 Flint Road** - Located one block south of Steeles Ave, and one block west of Dufferin St. This location is centrally located in North York in a well established industrial area, with TTC providing connections to all parts of the GTA.

### **1701 Flint Road - 5,275 s.f.**

- 43% finished office area
- 1 truck level door
- 100 amp 600 volt electrical

### **1703-1705 Flint Road - 7,323 s.f.**

- 30% finished office area
- 1 truck level door
- 100 amp 600 volt electrical

**Net Rent \$5.25/sf**

**TMI (Estimated 2017) \$3.45/sf**  
Plus administration fee

**AVAILABLE - Immediately**



*Inquiries call Sandi Cooper or email: [scooper@glencorp.com](mailto:scooper@glencorp.com)*

## GLENCORPORATION

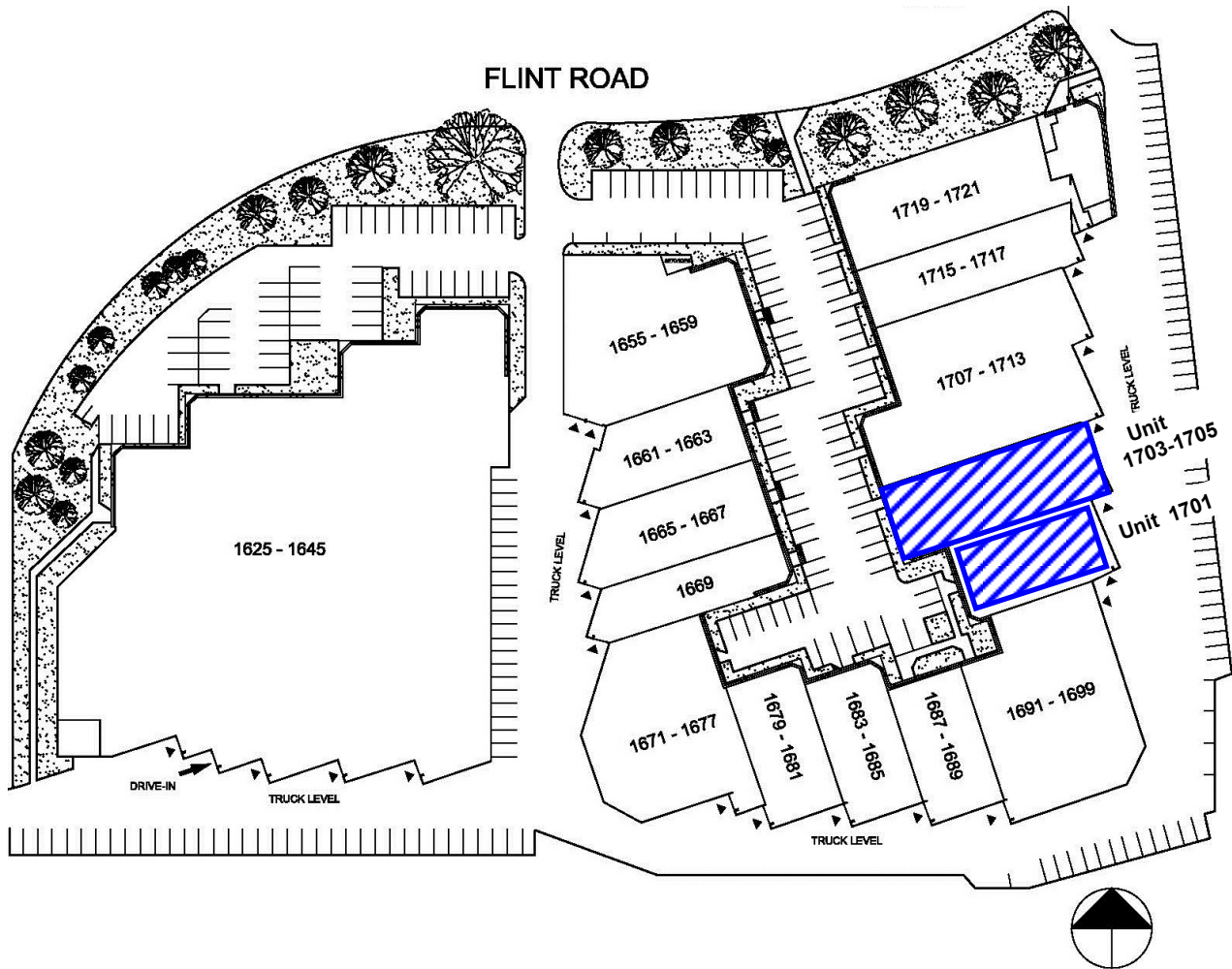
100 Scarsdale Rd, Don Mills, Ontario M3B 2R8 T. 416-449-3300 F. 416-449-0392 [www.glencorp.com](http://www.glencorp.com)

**INDUSTRIAL**

**NORTH YORK**

**FOR LEASE 5,275 & 7,323 s.f.**

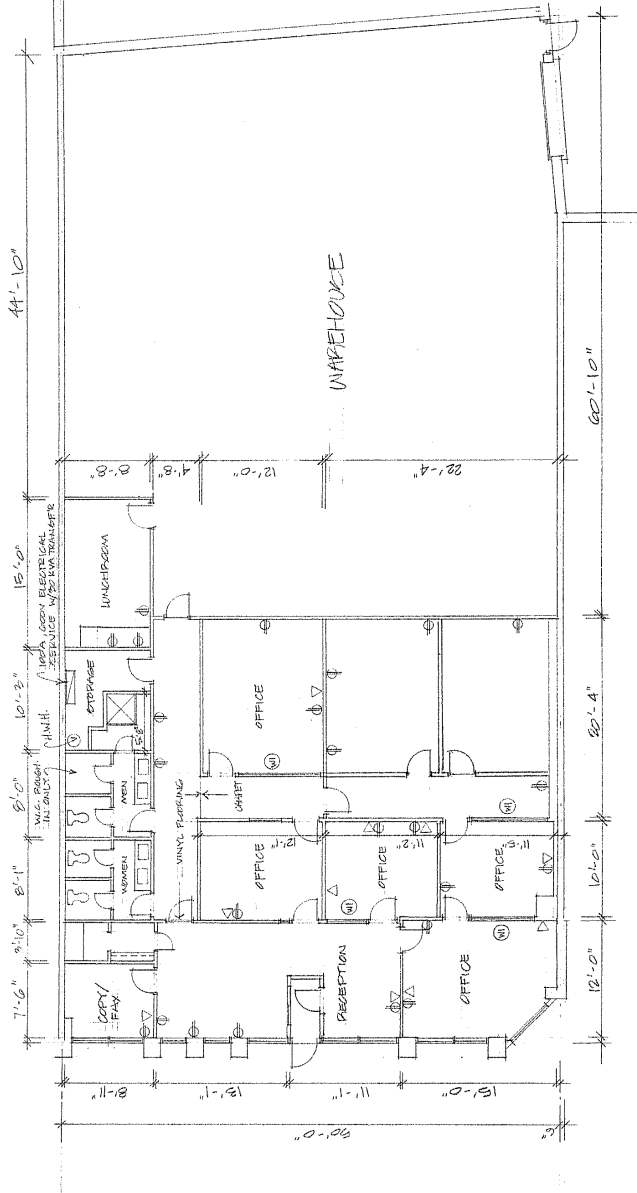
**1701 and 1703-1705 Flint Road**



*Inquiries call Sandi Cooper or email: [scooper@glencorp.com](mailto:scooper@glencorp.com)*

**GLEN CORPORATION**

100 Scarsdale Rd, Don Mills, Ontario M3B 2R8 T. 416-449-3300 F. 416-449-0392 [www.glencorp.com](http://www.glencorp.com)

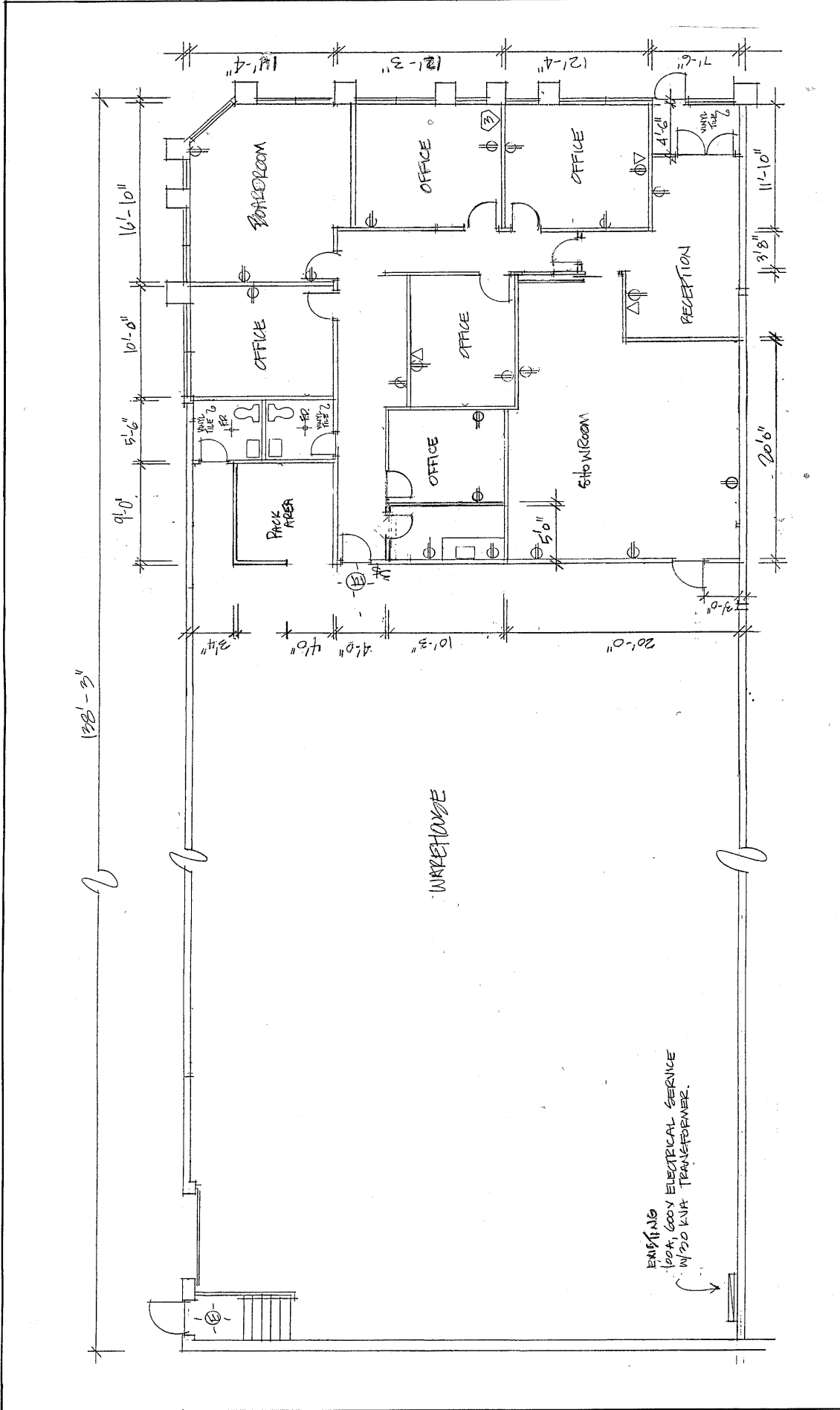


(M) INDICATES GLASS, SINGLE PANE WINDOWS FINISHED FLOOR TO CEILING

|           |          |                 |              |             |
|-----------|----------|-----------------|--------------|-------------|
| NUMBER    | 1        | UPDATE LAYOUT   | DATE         | 2/1/09      |
| REVISIONS |          |                 |              |             |
| TITLE     |          | EXISTING LAYOUT |              |             |
| PROJECT   |          | 1701 FLINT RD   |              |             |
| DATE      | 12/26/08 | SCALE           | 1/4" = 1'-0" |             |
| DESIGN    | AWA      | DRAWN           | AWA          | SHEET NO.   |
|           |          | CHECKED         | AWA          | DRAWING NO. |

**The Glen Group**  
 100 Scarsdale Road, Don Mills, Ontario M3B 2R8





| NUMBER                 | DESCRIPTION | DATE        |
|------------------------|-------------|-------------|
|                        | REVISIONS   |             |
| TITLE<br>1705 FLINT RD |             |             |
| DATE                   | DESIGN      | DRAWN       |
|                        |             | PREPARED    |
|                        |             | DRAWING NO. |

**GA** Glen Corporation  
 100 Scarsdale Road, Don Mills, Ontario M3B 2R8