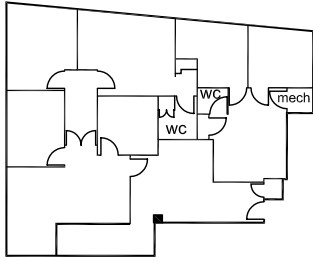


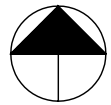
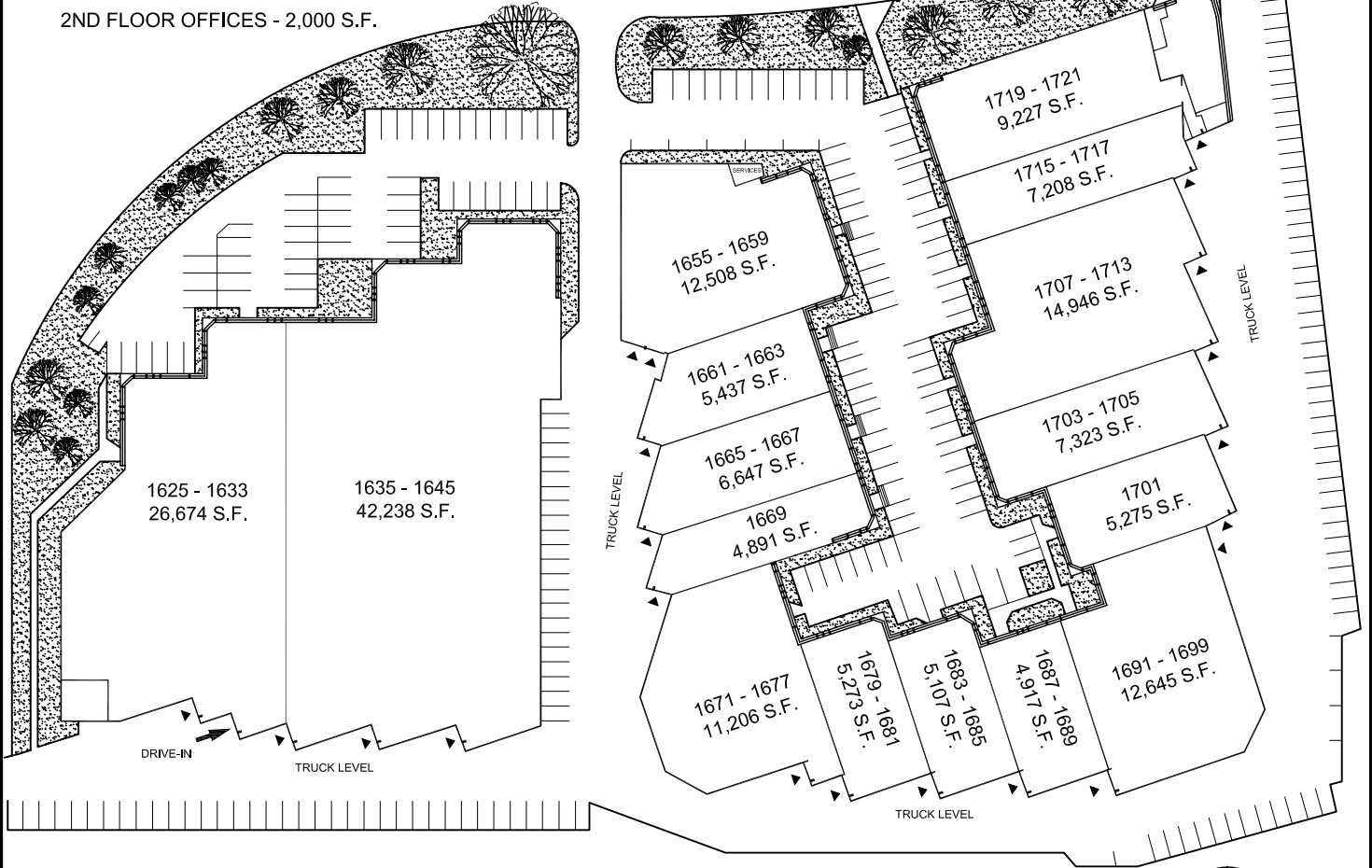
1625 - 1721 FLINT ROAD  
NORTH YORK, ONTARIO



2ND FLOOR OFFICES - 2,000 S.F.

FLINT ROAD

ENTRANCE TO 2ND FLOOR  
OFFICES - 2,000 S.F.



Solray Investments Limited  
Managed by  
Glen Corporation



**GLEN CORPORATION**

100 Scarsdale Road  
Don Mills, Ontario M3B 2R8  
Tel: 416-449-3300  
Fax: 416-449-0392  
[www.glencorp.com](http://www.glencorp.com)